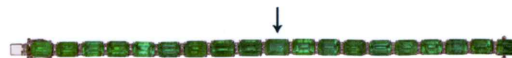




GLOBAL GEM-TESTING LABORATORY LIMITED

REPORT NO GGL202310-3798
DATE 5 October 2023
OBJECT One bracelet
IDENTIFICATION 1 Natural Emerald
WEIGHT Total 18.56 cts
(indicated by the client)
MEASUREMENTS approx. 5.94 x 4.32 (mm)
SHAPE AND CUT Octagonal Step Cut
COLOR Intense Green
CHARACTERISTICS Natural inclusion pattern
COMMENT CE(O): Minor
REMARKS One stones have been tested



Roy Chui, FGA DGA



GGL202310-3798

GGL Gem Identification Reports are issued under condition that the information and limitation on the reverse side form an integral part of the relevant contract with GGL.

Please note the regulations governing the declaration of gemstone treatments.

© GGL Gem-testing Laboratory Limited
Room 202, 2/F, Guardforce Centre, 3 Hok Yuen Street East, Hunghom, Kowloon, Hong Kong
Phone: +852-2362-2888