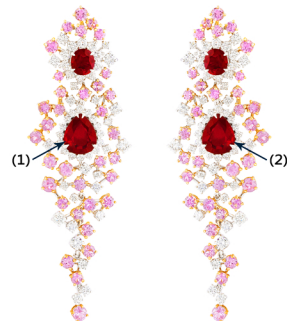




GLOBAL GEM-TESTING LABORATORY LIMITED

REPORT NO	GGL202408-1953
DATE	26 August 2024
OBJECT	Precious Stone Earrings
IDENTIFICATION	2 Natural Rubies
WEIGHT	Not weighed
MEASUREMENTS	(1) approx. 10.01 x 7.98 (mm) (2) approx. 10.04 x 7.96 (mm)
SHAPE AND CUT	Pear Mixed Cut
COLOR	Red
CHARACTERISTICS	Natural inclusion pattern
COMMENT	Enhanced by heat and cavities filled
REMARKS	Two stones have been tested



Roy Chui, FGA DGA



GGL Gem Identification Reports are issued under condition that the information and limitation on the reverse side form an integral part of the relevant contract with GGL.

Please note the regulations governing the declaration of gemstone treatments.