



GLOBAL GEM-TESTING LABORATORY LIMITED

REPORT NO

GGL202411-4971

DATE

13 November 2024

SHAPE AND CUT

Oval cabochon

DIMENSIONS(mm)

Approx. 12.55 x 10.16

WEIGHT(ct)

22.06

TRANSPARENCY

Translucent

COLOR

Intense green

CONCLUSION

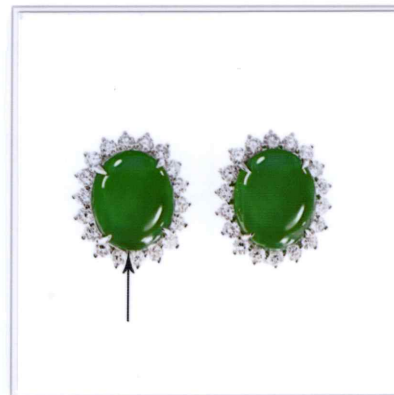
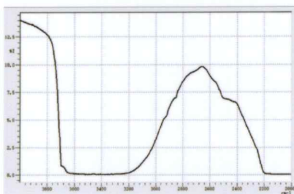
Natural Jadeite Jade

REMARKS

Total weight with mounting

INFRARED SPECTRUM

No resin is detected



Roy Chui, FGA DGA



GGL Gem Identification Reports are issued under condition that the information and limitation on the reverse side form an integral part of the relevant contract with GGL.

Please note the regulations governing the declaration of gemstone treatments.

© GGL Gem-testing Laboratory Limited  
Room 202, 2/F, Guardforce Centre, 3 Hok Yuen Street East, Hungghom, Kowloon, Hong Kong  
Phone: +852-2362-2888