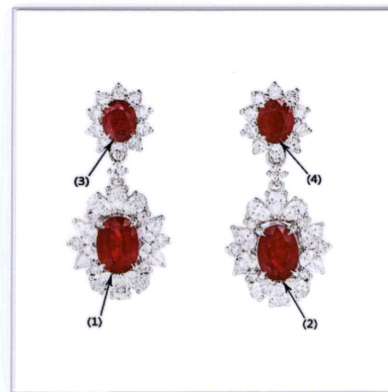




GLOBAL GEM-TESTING LABORATORY LIMITED

REPORT NO	GGL202508-11006
DATE	21 August 2025
OBJECT	Ruby Diamond Earrings
IDENTIFICATION	4 Natural Rubies
WEIGHT	Not weighed
MEASUREMENTS	(1) approx. 7.09 x 5.19 (mm) (2) approx. 6.74 x 4.85 (mm) (3) approx. 5.21 x 4.16 (mm) (4) approx. 5.19 x 4.26 (mm)
SHAPE AND CUT	Oval Mixed Cut
COLOR	Deep Red
CHARACTERISTICS	Natural inclusion pattern
COMMENT	H
REMARKS	Four stones have been tested



Roy Chui, FGA DGA



GGL Gem Identification Reports are issued under condition that the information and limitation on the reverse side form an integral part of the relevant contract with GGL.

Please note the regulations governing the declaration of gemstone treatments.

© GGL Gem-testing Laboratory Limited
Room 202, 2/F, Guardforce Centre, 3 Hok Yuen Street East, Hungghom, Kowloon, Hong Kong
Phone: +852-2362-2888